

# Activity Corridor

# Wellness Zone

# Pang Sua Promenade

Areas under certain stretches of the North-South Line MRT viaduct will be rejuvenated to offer different community spaces to enrich residents' recreational experiences.

Enhanced wayfinding features will guide residents to explore new and interesting spaces along the Activity Corridor.



▲ Play and event space at residents' doorstep.

增進與新加坡地下鐵沿線車站的活力與綠地空間，以居民親近使用。

Akan ada nod komuniti baru di ruang di bawah jambatan MRT untuk pelbagai aktiviti, termasuk kawasan permainan asid dan ruang ruang tenang untuk kesihatan diri. Para penduduk boleh menikmati ruang lounge baru ini dalam kawasan kejiranan mereka.

Di bahagian setelan bandar Choa Chu Kang, konsep kesihatan sedang diperkenalkan. Ini termasuk ruang-ruang pemulihan untuk beransat, dan peluang kemudahan rekreasi dan sukan untuk gaya hidup aktif.

**Limbang Green Spine**  
Provides resting places, sheltered linkways and new fitness equipment to encourage healthier lifestyles.



▲ Improved sheltered connectivity with linkways.



▲ New fitness equipment reminiscent of Ninja Warrior.

**Yew Tee Lifestyle Corridor**  
Spanning from the Pang Sua Canal to Yew Tee MRT station, the Yew Tee Lifestyle Corridor will feature elements from Yew Tee's rich history.



▲ A large community pavilion for activities and gatherings.



▲ A new water play feature for families to enjoy.

Restorative and therapeutic spaces will be introduced. There will also be recreational and sports facilities, such as the Brickland Sport-in-Precinct and BMX tracks, to support active lifestyles.



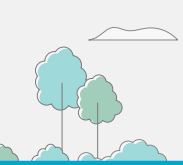
▲ Rest stop along Choa Chu Kang Park Connector provides a space for rest and relaxation.

增進與新加坡地產區更具健康的體驗，這包括建設以身心健康的休憩空間，以及一系列不同的康樂和體育設施，包括長跑與越野跑的生活方式。

Di bahagian setelan bandar Choa Chu Kang, konsep kesihatan sedang diperkenalkan. Ini termasuk ruang-ruang pemulihan untuk beransat, dan peluang kemudahan rekreasi dan sukan untuk gaya hidup aktif.

Apabila Pang Sua Canal diperbaiki, para penduduk boleh menikmati lebih banyak kehidupan.

**Sungei Peng Siang will be beautified with enhanced greenery for a pleasant jogging and cycling experiences.**



▲ When completed in 2025, Brickland Sport-in-Precinct will include a basketball court, playground and fitness corners.



▲ Canal will be beautified with creepers along its walls.



**Beautifying Infrastructure**  
Greenery will be added along the canal to enhance liveability and biodiversity.

**Improving Connections**  
A cycling ramp will be introduced to improve access to canal.

▲ Improved entrance for easy access to healthy lifestyle options.



A popular spot amongst residents, Pang Sua Canal will be further enhanced to provide a pleasant experience.

Apabila Pang Sua Canal diperbaiki, para penduduk boleh menikmati lebih banyak kehidupan.

Apabila Pang Sua Canal diperbaiki, para penduduk boleh menikmati lebih banyak kehidupan.

Apabila Pang Sua Canal diperbaiki, para penduduk boleh menikmati lebih banyak kehidupan.



Share your feedback with us using the QR code!